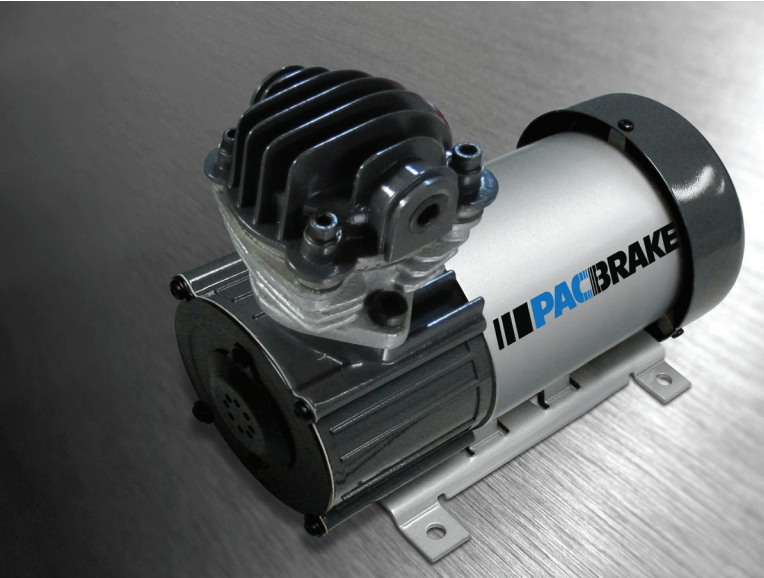


III PACBRAKE®

HP625 24V AIR COMPRESSOR



PRODUCT FEATURES –

- Sealed bearings
- Cast steel cylinder with hard anodized aluminum sleeve
- PTFE piston ring
- Mountable in any orientation

GENERAL DATA

Model	HP10137
Weight	17.7 lbs
Ambient Temperature Range	-30 to 70°C
Max Duty Cycle	100%
Operating Life	500 hrs*
Ingress Protection	IP52 (IP55 w/remote intake)

PNEUMATIC DATA

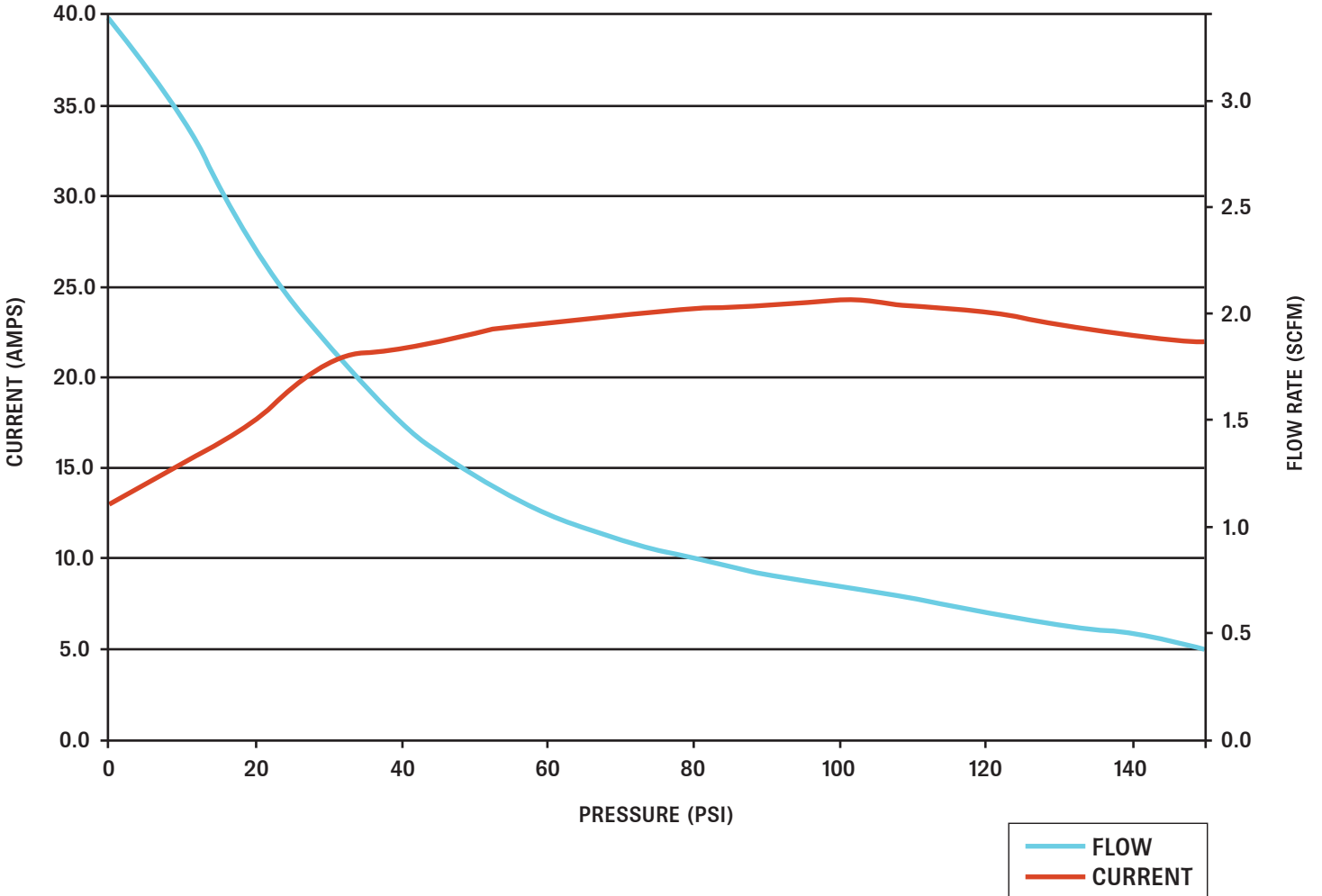
Max Flow	3.4 SCFM
Max Working Pressure	150 PSI
Max Restart Pressure	5 PSI

ELECTRICAL/MOTOR DATA

Motor Type	Permanent Magnet DC
Operating Voltage	24 V ±15%
Nominal Current Draw	22.5 A
Nominal Power	3/4 HP
Nominal Speed	3000 RPM

**Operating life may be dependent on application*

HP625 24V AIR COMPRESSOR @ 27.6 V - CURRENT AND FLOW RATE VS. PRESSURE



HP625 24V AIR COMPRESSOR DIMENSIONS (IN INCHES)

